



A yellow 3D arrow pointing towards the top right.

TestArchitect 9.0

Dec 2020

Release Notes for Windows



1730 S. Amphlett Blvd, Suite 200, San
Mateo, CA 94404

Phone (650) 572-1400
(800) 322-0333

Fax (650) 572-2822

Web www.logigear.com

Contents

What's New in TestArchitect 9.0	3
TestArchitect Client.....	3
TestArchitect Automation.....	4
System Requirements	4
Recommended system requirements.....	4
Additional Resources	5

Please note:

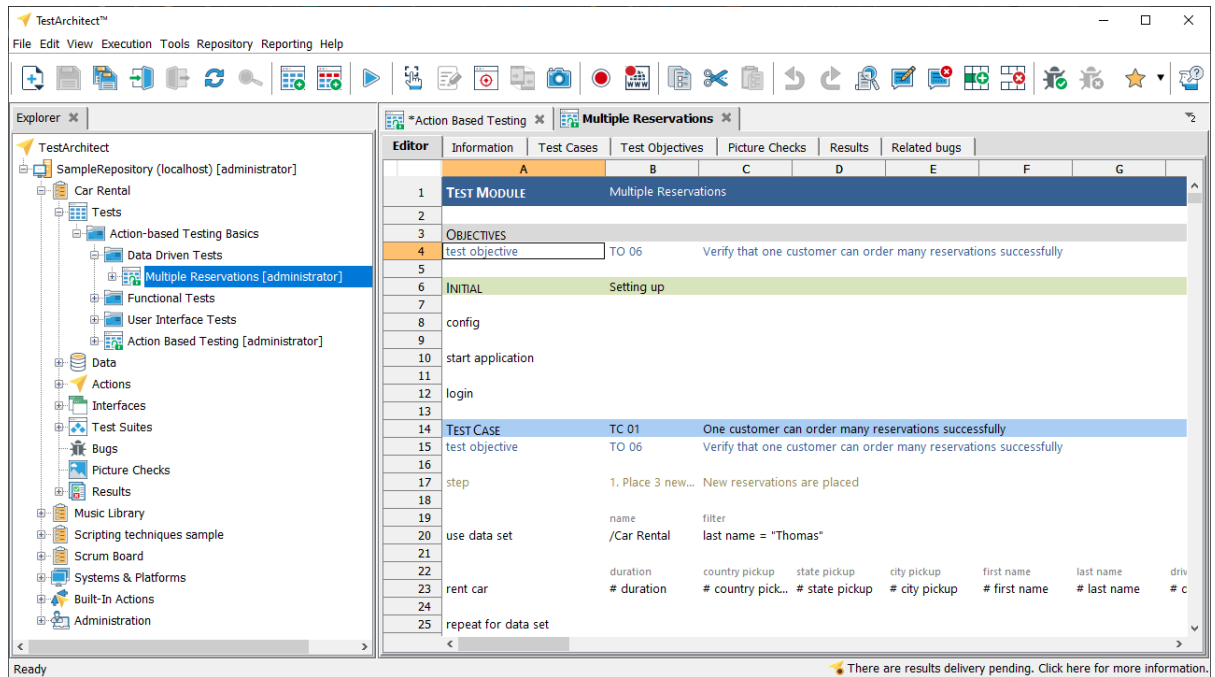
- Before upgrading to the latest version of TestArchitect, it is strongly recommended that you back up all repositories and check in all test artifacts.
- Before upgrading to TestArchitect 9.0, you need to upgrade License Server to 9.0.

What's New in TestArchitect 9.0

The following new features and improvements are introduced in the latest version of TestArchitect running on Windows.

TestArchitect Client

- **Azure DevOps Services integration** - Now, you and your team can easily integrate your project, link test assets and upload your test results to Azure DevOps Services via REST. In this version, TestArchitect officially supports the following functions:
 - [Configuring TestArchitect for an Azure DevOps Services connection](#)
 - [Mapping a TestArchitect project to an Azure DevOps project](#)
 - [Mapping TestArchitect test cases to ADO test cases](#)
 - [Mapping TestArchitect test modules to ADO test cases](#)
 - [Automatically uploading TestArchitect test results to Azure DevOps Services](#)
 - [Manually uploading TestArchitect test results to Azure DevOps Services](#)
- **Proxy Settings** – It's a security best practice to use proxy servers to protect your teams from external threats. Now you can configure all components of TestArchitect to work smoothly in your proxy-protected networks, especially when TestArchitect needs to communicate with cloud-based services such as Azure DevOps Services and License Management Service hosted by LogiGear.
 - [Proxy Settings for TestArchitect Client](#)
 - [Proxy Settings for Repository Server](#)
 - [Proxy Settings for License Server](#)
- **Brand new TestArchitect User Interface** - TestArchitect 9.0 has an updated look & feel for a better user experience and various enhancements to improve readability on larger computer screens with higher resolutions.



TestArchitect Automation

- Support for [Chrome 86, 87](#) and [Firefox 82, 83](#): Now you can run automated tests for web pages with the latest versions of Chrome and Firefox.
- Support for [Chrome 85+](#) on Android
- Support for Oracle DB version 19c
- Support for Windows 10 version 1909

System Requirements

The following table lists the recommended hardware and software requirements for TestArchitect.

Recommended system requirements

	TestArchitect Client/Controller with small-scale Repository Server	Production-scale Repository Server (up to 15 concurrent connections, 1GB repository)
Operating system	Windows 10 (Learn more)	Windows 2016/2019 Server
RAM	4 GB	8 GB
HDD	At least 2.5GB available space	Available space of at least 2GB plus the total aggregate size of all databases
CPU	2 GHz dual-core or faster	3.1 GHz quad-core

Additional Resources

For more information, please visit our website at www.testarchitect.com or email us at sales@logigear.com.